



# WAVERTON MULTI-ASSET GROWTH FUND

31 January 2026

## Fund aim

The investment objective of Waverton Multi-Asset Growth Fund is to achieve long term capital growth through investment of up to 100% of its assets in a diversified portfolio of equities, fixed and/or floating rate global government and corporate debt securities, structured products, deposits, cash, money market instruments and commodities.

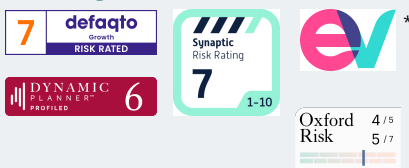
## Investment style

The Fund has a multi-asset structure and invests in a portfolio of direct equities, bonds and alternative strategies, and may use open-ended funds and exchange traded funds to gain exposure to those asset classes. The Fund will maintain a relatively concentrated portfolio with a high degree of flexibility.

## Fund facts

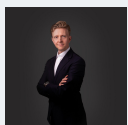
Launch date	15 February 2021
IA sector	IA Mixed 40-85% Equity
Benchmark	CPI +3.5%
Fund size	GBP 805.2m
No. of holdings	99
Domicile	Ireland
Sedol	BMVHFT7
Bloomberg code	WAWMGP ID
Fund type	OEIC
Base currency	GBP
Other currencies	None
Ex dividend dates	31 Jan, 30 Apr, 31 Jul, 31 Oct

## Ratings and awards

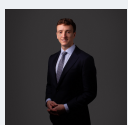


\* for further information please contact W1M

## Fund manager



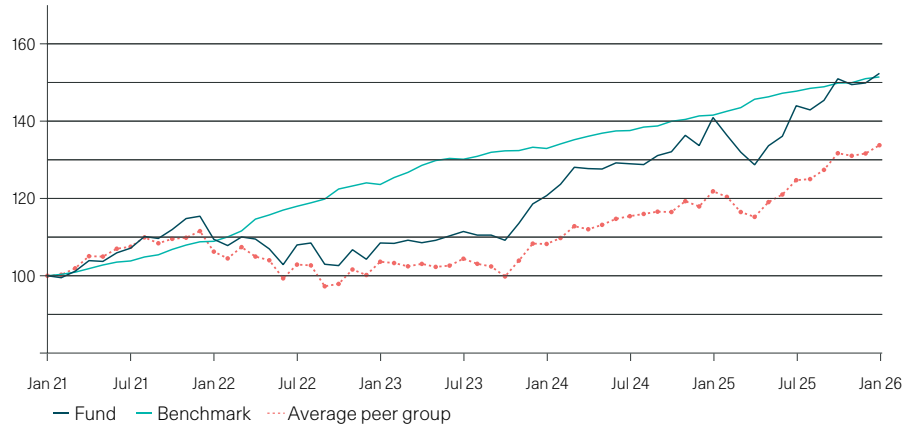
James Mee - CFA  
Co Fund Manager



Matthew Parkinson - CFA  
Co Fund Manager

## Performance

### Five year performance (%)



Period performance (%)	1 month	3 months	YTD	1 year	3 years	5 years	Inception Mar 07
Fund	1.7	0.9	1.7	8.1	40.5	52.4	337.3
Benchmark	0.3	1.1	0.3	7.0	22.5	51.4	224.9
IA Mixed 40-85% Equity	1.6	1.5	1.6	9.6	28.7	35.0	188.3
Quartile	2	3	2	3	1	1	1

Calendar year performance (%)	2025	2024	2023	2022	2021
Fund	12.1	12.7	13.7	-9.6	15.0
Benchmark	6.8	6.1	7.4	14.0	8.9

Annual discrete performance (%) - 12 months to	31/01/26	31/01/25	31/01/24	31/01/23	31/01/22
Fund	8.1	16.7	11.3	-0.9	9.4

Important information: Performance displayed is for the Waverton Multi-Asset Growth Fund P GBP INC Share Class. The Waverton Multi-Asset Growth Fund launched on 15 February 2021. The P income share class was launched on 12 March 2021. Historic performance prior to 12 March 2021 is illustrated using Waverton Portfolio Fund A Class performance, calculated on the same fee basis as the Waverton Multi-Asset Growth Fund. The two Funds have the same investment approach, asset allocation and fund manager. The Waverton Portfolio Fund launched on 30 March 2007. Returns are calculated on a NAV to NAV basis, net of fees and assumes income is reinvested.

## Share class information

Share class	ISIN	AMC (%)	NAV	Historic yield (%)	Ongoing charge (%)
A GBP INC	IE00BMVHFR50	1.00	14.15	0.9	1.07
B GBP INC	IE00BMVHFS67	0.75	13.17	1.1	0.83
P GBP INC	IE00BMVHFT74	0.40	14.08	1.4	0.47
P GBP ACC	IE00BMVHFV96	0.40	15.15	N/A	0.47

The share classes listed above are subject to minimum investment amounts. Please refer to the Fund Prospectus or your usual W1M contact for further details.

Note: The Multi-Asset Growth Fund P share class is only available through Financial Advisers.

Risk warning: Past performance is no guide to future performance. The value of holdings may fall as well as rise. All financial investments involve an element of risk. Clients should note that yields on investments may fall or rise dependent on the performance of the underlying investment and more specifically the performance of financial markets. As such, no warranty can be given that the expressed yields will consistently attain such levels over any given period. Currency movements may also affect the value of the investment. If the currency in which the past performance is displayed differs from the currency of the country in which you reside, then you should be aware that due to exchange rate fluctuations the performance shown may increase or decrease if converted into your local currency.

Sources: W1M, Morningstar, RIMES.

## Portfolio summary

<b>Asset allocation</b>	<b>(%)</b>	<b>Top 10 holdings</b>	<b>(%)</b>
Equities	75.3	United Kingdom Gilt 4.375% 31/01/2040	5.5
Bonds	11.3	Alphabet	3.1
Alternatives	9.1	Amazon	2.6
Cash	4.3	Hitachi	2.4
<b>Total</b>	<b>100.0</b>	Sumitomo Mitsui Financial Group	2.3
		Taiwan Semiconductor Manufacturing	2.3
		GE Aerospace	2.2
		Microsoft	2.2
		Canadian Pacific Kansas City	2.2
		Inditex	2.2
		<b>Total</b>	<b>27.0</b>

### Contact details

W1M  
Phone: +44 (0) 20 4617 2354  
Email: [funds@w1m.com](mailto:funds@w1m.com)

### Administrator

CACEIS Ireland Limited  
[Dublin\\_TA\\_Customer\\_Support@caceis.com](mailto:Dublin_TA_Customer_Support@caceis.com)

For full details of investment risks please refer to the Prospectus. A copy of the full prospectus and the KIID is available from W1M Investment Management Limited or the Administrator, CACEIS Ireland Limited.